

*financial report**
Oct. 1, 2005-Sept. 30, 2006

	2006		2005	
	\$	%	\$	%
support and revenue				
Contributions and Memberships	\$1,625,631	22%	\$1,411,420	22%
The Holden Arboretum Trust	4,169,159	57	3,835,664	58
The Arboretum Endowment	706,971	10	671,576	10
Special Events (Net)	139,930	2	25,773	0
Admissions	49,329	1	23,557	0
Museum Store Gross Profit	82,852	1	85,150	1
Investment Income	325,529	4	310,452	5
Rental Income	127,272	2	122,266	2
Education Courses	82,683	1	71,681	1
Other Income	28,635	0	64,102	1

Total Support & Revenue **\$7,337,991 100%** **\$6,621,641 100%**

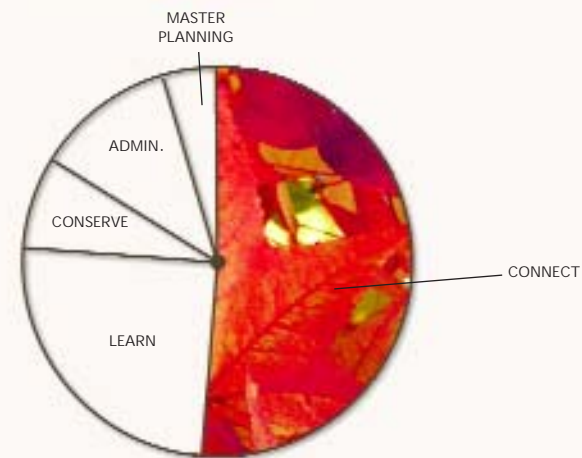
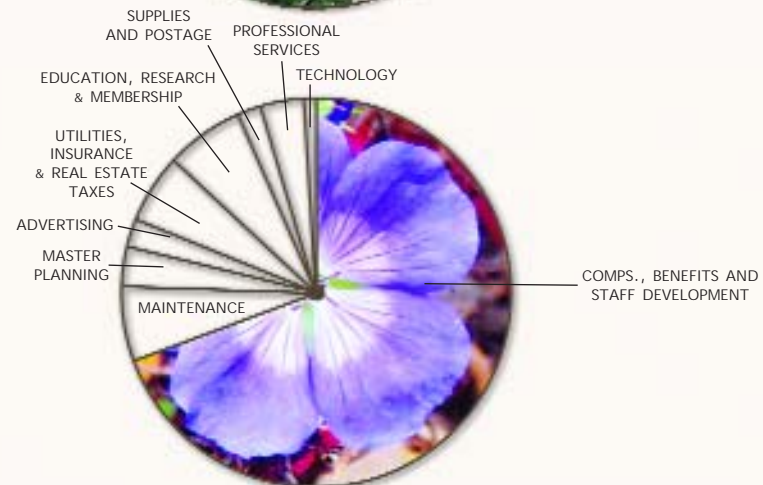
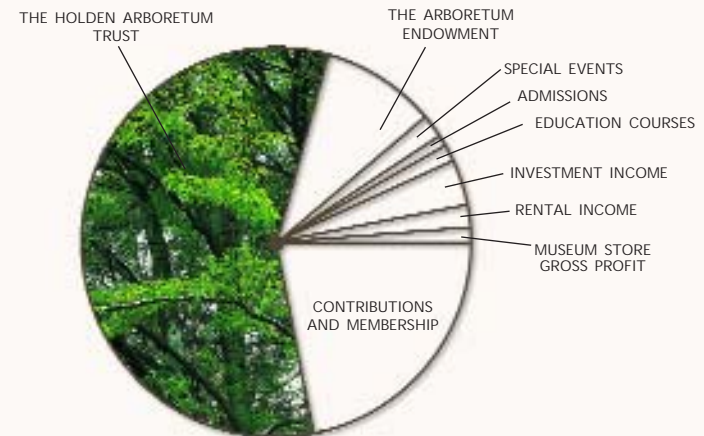
	\$	%	\$	%
expenses				
Comp., Benefits and Staff Development	\$5,033,269	69%	\$4,706,224	71%
Maintenance	411,254	6	470,446	7
Professional Services	253,937	3	309,309	5
Advertising	169,792	2	135,078	2
Utilities, Insurance and Real Estate Taxes	420,387	6	367,844	6
Education, Research and Membership	488,250	7	413,211	6
Supplies and Postage	146,422	2	110,935	2
Master Planning	270,593	4	0	0
Technology	52,940	1	51,054	1
Projects and Other	48,509	0	34,333	0

Total Expenses **\$7,295,353 100%** **\$6,598,434 100%**

Increase/(Decrease) in Net Assets from Operations \$42,638 \$23,207

	\$	%	\$	%
expenses by mission				
Connect	\$3,691,915	51%	\$3,578,460	54%
Learn	1,851,096	25	1,566,248	24
Conserve	581,343	8	589,892	9
Administration	900,406	12	863,834	13
Master Planning	270,593	4	0	0

\$7,295,353 100% **\$6,598,434 100%**



*Data in this reporting format includes the Unrestricted General Fund and the Temporarily Restricted Fund.